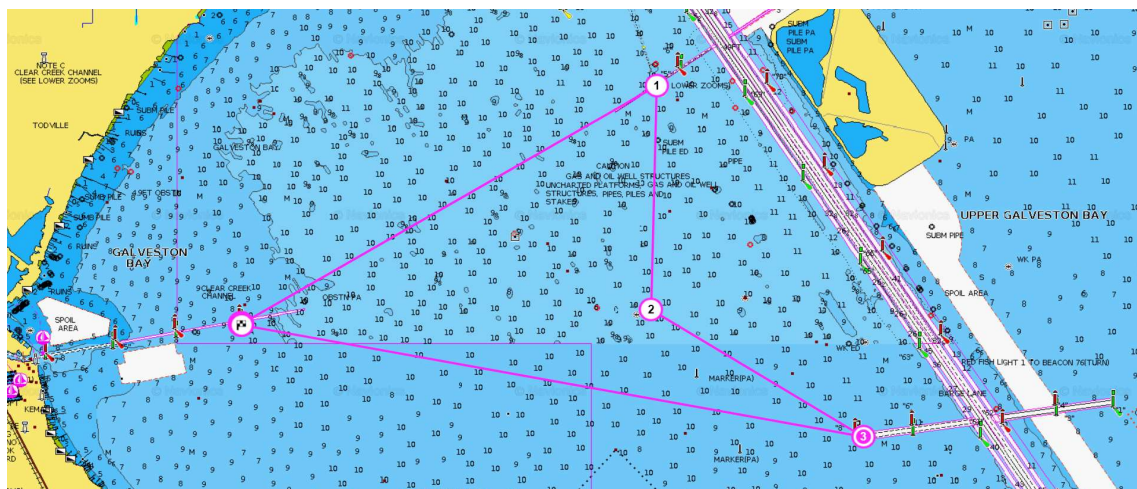


TASS Regatta
Carol Becker Race 2023
PHRF Spinnaker

Course Length: 10.20

| Sail # | Boat Name | PHRF | Seconds Per mile | Adjust | Time Adjust | Start Time | Finish Time | RaceQs |
|--------|--------------|------|------------------|--------|-------------|------------|-------------|--------|
| 195 | Shakey Waves | 135 | 0 | 0 | | 13:25:00 | | |
| | Spitfire | 87 | 48 | 490 | 08:10 | 13:33:10 | | |

| Mark | Lat | Long | Round | Bearing to next mark | Distance to next mark |
|-----------------------|------------|------------|-------|----------------------|-----------------------|
| Clear Lake Channel #1 | 29° 33.115 | 94° 59.537 | STBD | 060 | 3.10 |
| High Range Mark F | 29° 34.668 | 94° 56.522 | STBD | 181 | 1.60 |
| H Mark | 29° 33.256 | 94° 56.552 | PORT | 081 | 1.50 |
| South Boaters Cut #8 | 29° 32.419 | 94° 55.078 | STBD | 302 | 4.00 |
| Clear Lake Channel #1 | 29° 33.115 | 94° 59.537 | STBD | | 10.20 |



INSTRUCTIONS

This is a spinnaker race. THERE MUST BE A WOMAN AT THE HELM AT ALL TIMES FROM START TO FINISH.

The Race Start is between CL#1 and #2. The Race Finish is between CL#1 and the Committee Boat.

The Committee Boat will be due South of the Clear Lake # 1

Standard rules of racing apply. There are no protests. Early overs at the start are expected to return to the Start and do a 360 turn.

Upon completion of the race, you need to record your finish time per GPS. It must be texted to the Race Czar at 713.412.7693

Use channel 72 for communication . Any questions, you can reach the Race Czar by phone at 713.412.7693

The RaceQ website is <http://raceqs.com/regattas/100822>