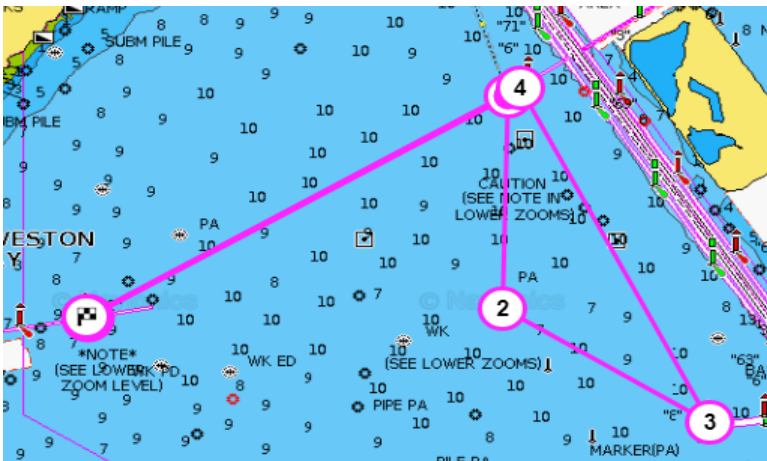


Tass Regatta
Spring Challenge

Course Length: 11.80

Boat Name	TASS Handicap	Seconds Per mile	Adjust	Time Adjust	Start Time	Finish Time
OxBow	270	0	0		13:00:00	
Mystic Winds	234	36	425	07:05	13:07:05	
Gypsy Soul	230	40	472	07:52	13:07:52	
Sunspot Baby	200	70	826	13:46	13:13:46	
Hobgoblin	171	99	1168	19:28	13:19:28	
Astarte	150	120	1416	23:36	13:23:36	

Mark	Lat	Long		Bearing to next
Kemah 1-2	29° 33.166	94° 59.546	START	60°
F Mark	29° 33.787	94° 56.993	STBD	181°
H Mark	29° 33.256	94° 56.54	PORT	121°
SBC 8	29° 32.406	94° 55.078	PORT	333°
F Mark	29° 33.787	94° 56.993	PORT	240°
Kemah 1-2	29° 33.166	94° 59.546	FINISH	



1. Upon completion of the race, you need to record your finish time per GPS. That time must be texted to the Race Czar at 713.412.7693 in a timely fashion.
2. Early overs at the start are expected to return to the Start and do a 360 turn.
3. Keep clear of the start box until your start time.
4. Standard rules of racing apply. All roundings must be made as prescribed. There are no protests.
3. Be sure to turn on your RaceQ cell phone app and turn on live streaming at top of the page. The site for the race is <http://raceqs.com/regattas/89368>
4. Any questions, you can reach me by phone at 713.412.7693. Monitor 71 for other boats.

SPECIAL NOTE: Rule 55.2 Spinnaker Poles; Whisker Poles

Only one spinnaker pole or whisker pole shall be used at a time except when gybing. When in use, it shall be attached to the foremost mast.

This means only a spinnaker pole or a whisker pole can be used. Boat hooks held by crew or propped against the mast are not legal.