

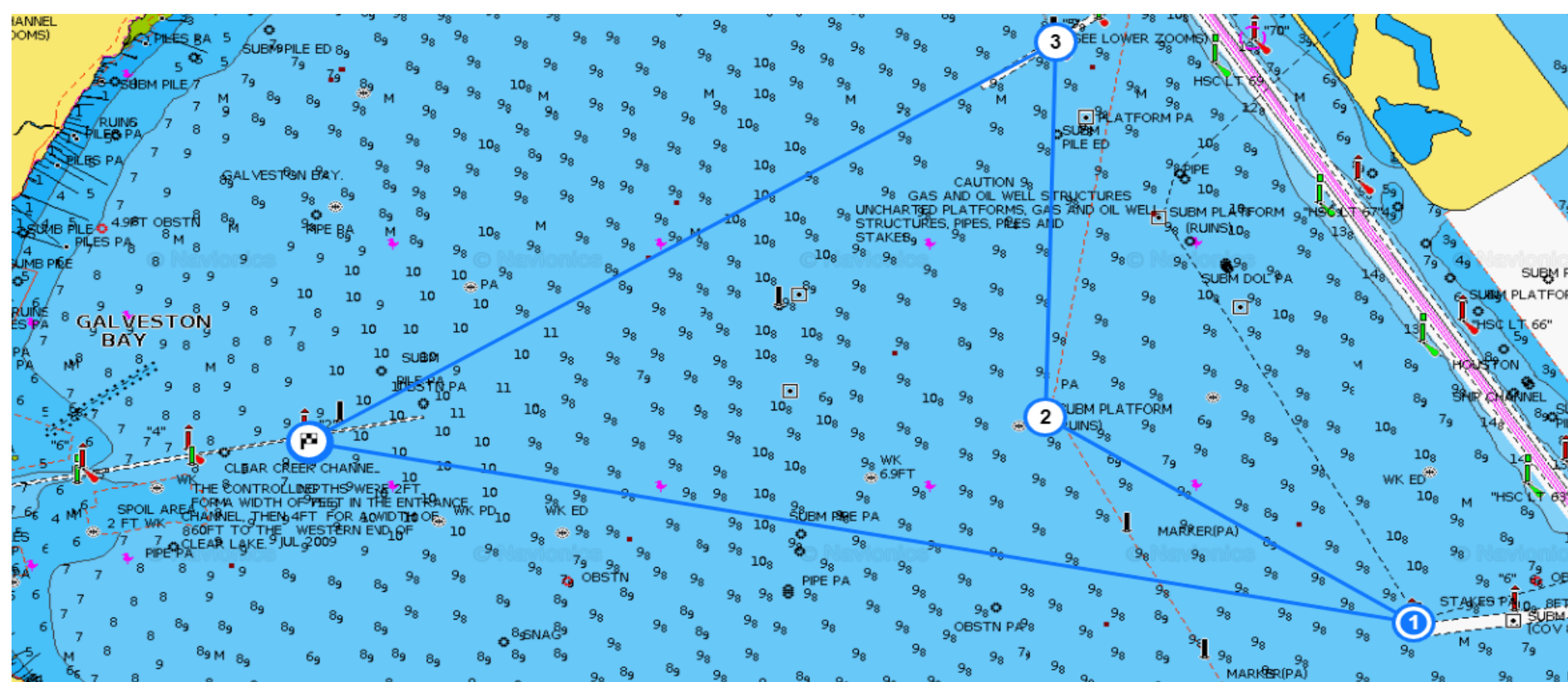
Tass Regatta
Carol Becker Race 2021
Club Handicap

Course Length: 10.20

Sail #	Boat Name	TASS Handicap	Seconds Per mile	Adjust	Time Adjust	Start Time	Finish Time	RaceQs
196	Oxbow	260	0			13:00:00		
H38	Mystic Wind	232	28	286	04:46	13:04:46		
446	C'est La vie	204	56	571	09:31	13:09:31		
586	Hobgoblin	181	79	806	13:26	13:13:26		
	Alcyone	181	79	806	13:26	13:13:26		

Mark	Lat	Long	Round	Bearing to next mark	Distance to next mark
Clear Lake Channel #1	29° 33.112	94° 59.529	STBD	100	4.00
South Boaters Cut #8	29° 32.392	94° 55.031	PORT	302	1.60
H Mark	29° 33.215	94° 56.558	STBD	001	1.50
High Range Mark F	29° 34.673	94° 56.517	PORT	240	3.10
Clear Lake Channel #2	29° 33.164	94° 59.549	STBD		

10.20



INSTRUCTIONS

This is a non- spinnaker race. THERE MUST BE A WOMAN AT THE HELM AT ALL TIMES FROM START TO FINISH.

Standard rules of racing apply. There are no protests. Early overs at the start are expected to return to the Start and do a 360 turn.

Upon completion of the race, you need to record your finish time per GPS. It must be texted to the Race Czar at 713.412.7693

Use channel 72 for communication . Any questions, you can reach the Race Czar by phone at 713.412.7693

The RaceQ website is <http://raceqs.com/regattas/85915>