

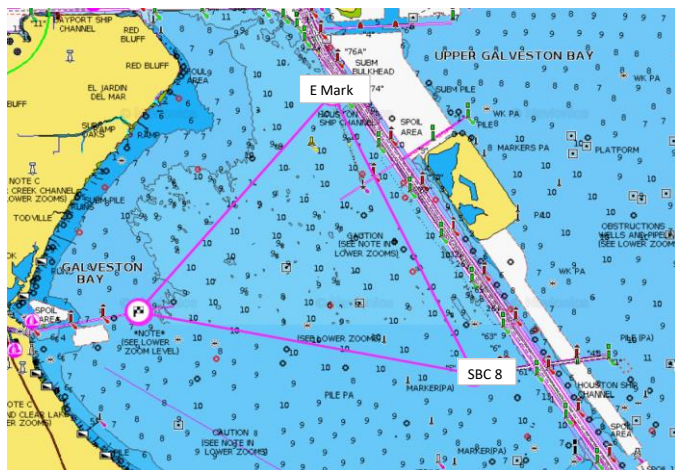
TASS Regatta

Course Length: 11.30

Mexi Mix Fiesta Race

Boat Name	TASS Handicap	Seconds Per mile	Adjust	Time Adjust	Start Time	Finish Time
OxBow	280	0	0		13:00:00	
Sloop Dog	220	60	678	11:18	13:11:18	
Sunspot Baby	219	61	689	11:29	13:11:29	
Vixen	196	84	949	15:49	13:15:49	
Flyer	182	98	1107	18:27	13:18:27	
Alchemy	182	98	1107	18:27	13:18:27	
Bohemian Mermaid	154	126	1424	23:44	13:23:44	
Rainbow	149	131	1480	24:40	13:24:40	
Astarte	145	135	1526	25:26	13:25:26	
Alive and Free	144	136	1537	25:37	13:25:37	

Mark	Lat	Long	Round	CLOCKWISE			COUNTER CLOCKWISE		
				Mark	Lat	Long	Mark	Lat	Long
Kemah 1 & 2	29° 33.115	94° 59.537	START	Kemah 2	29° 33.166	94° 59.546	START		
E Mark	29° 35.801	94° 56.937	STBD	SBC 8	29° 32.419	94° 55.078	PORT		
SBC 8	29° 32.419	94° 55.078	STBD	E Mark	29° 35.801	94° 56.937	PORT		
Kemah 1 & 2	29° 33.166	94° 59.546	FINISH		29° 33.166	94° 59.546	FINISH		



INSTRUCTIONS

THIS IS A SKIPPER'S CHOICE COURSE. YOU MAY RUN THE COURSE IN EITHER DIRECTION, AS LONG AS YOU ROUND AS PRESCRIBED ABOVE.

1. Upon completion of the race, you need to record your finish time per GPS. That time must be texted to the Race Czar at 713.412.7693 in a timely fashion.
2. Early overs at the start are expected to return to the Start and do a 360 turn.
3. Keep clear of the start box until your start time.
4. Standard rules of racing apply. All roundings must be made as prescribed. There are no protests.
3. Be sure to turn on your RaceQ cell phone app and turn on live streaming at top of the page. The site for the race is <http://raceqs.com/regattas/107657>
4. Any questions, you can reach me by phone at 713.412.7693. Monitor 71 for other boats.